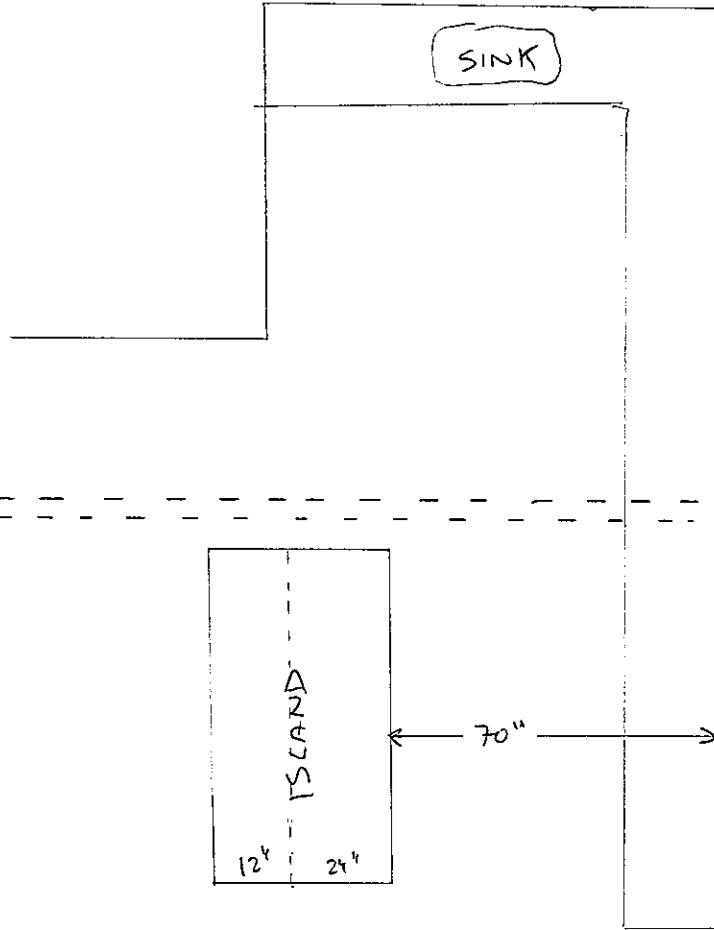
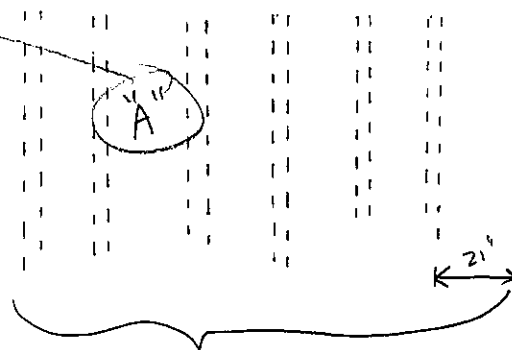


SUPPORTING WALL BELOW



PLAN "A"

- REMOVE DRYWALL BELOW AND ADD MORE PLYWOOD OR 12' 2x4'S TO SIDE OF EXISTING JOISTS IN GAP "A"



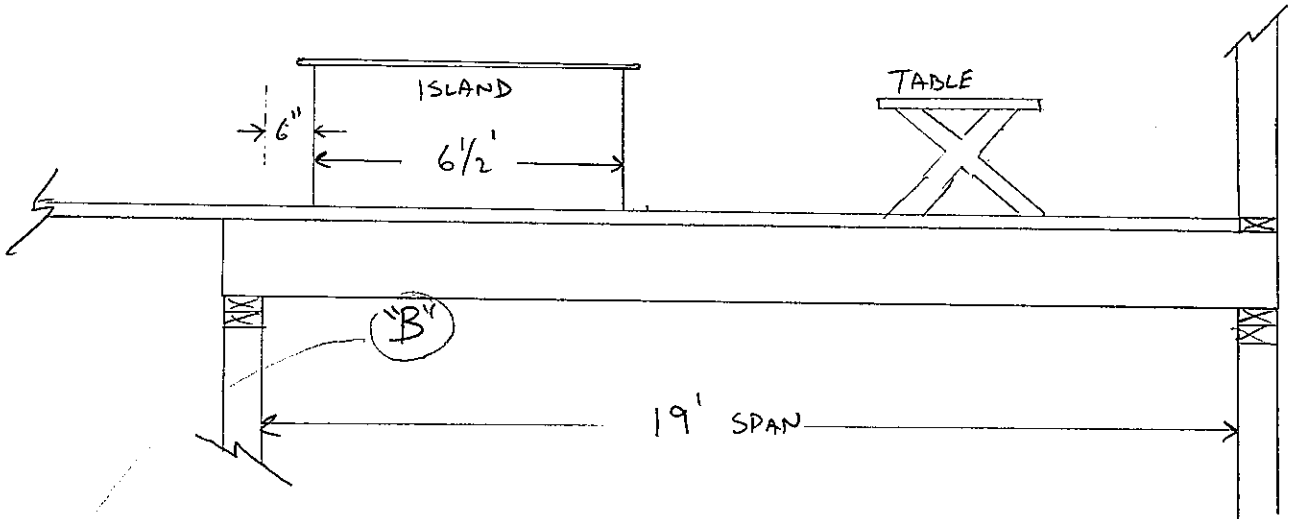
JOISTS 21" FROM WALL,
THEN 16" O.C.

WALL

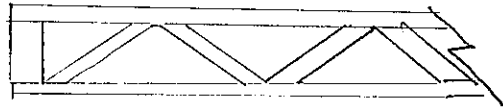
ISLAND

500# GRANITE
75# CABINETS
150# STUFF?

725# DEAD WT TOTAL



2x4 TRUSSES
- WITH 1/2" OSB ON
BOTH SIDES



PLAN "B"

ADD SUPPORT POST IN BASEMENT
APPROX 3' FROM WALL, WHICH WOULD
BE APPROX IN CTR OF ISLAND