

FastPlan Notes:
 RFPI, RigidLam, and Roseburg Framing System are trademarks of Roseburg Forest Products, Roseburg, Oregon.
 Specified products are sized for gravity loads only. Prior to installation, review these layouts with the project designer or engineer of record.
 For additional installation details and information please refer to our Installation Guide.
 Do not notch or cut holes in engineered wood products outside the guidelines of the Installation Guide.
 These products were designed for "dry use" conditions only and must be protected from long term exposure to high moisture.
WARNING: DO NOT ALLOW WORKERS ON I-JOISTS UNTIL PROPERLY BRACED.
 See Installation Guide for additional information.



Wholesale Wood Products
 819 Cowarts Rd
 Dothan, AL
 USA
 36302
 800-633-0906

General Installation Notes:
 I-joists require 1 1/4" minimum bearing and should be nailed to bearing plate with one 10d box/sinker nail each side.
 I-joist rim and FiberStrong Rim Board should be nailed to the bearing plate with 8d nails @ 6" O.C.
 Side loaded, double I-joists shall be packed solid and connected with 2 rows of 10d nails @ 12" O.C.
 Plumbing Conflicts: Every third joist may be shifted up to 3" to avoid plumbing.
 Deck attachment: Exterior decks may be attached to 1 1/8" FiberStrong Rim Board with 1/2" diameter lag screws or thru bolts (capacity = 350 lbs per fastener)

Minimum multiple LVL fastening:
 14" depth or less 2 rows 16 d nails @ 12" O.C.
 16" depth and greater 3 rows 16d nails @ 12" O.C.

Second Floor Framing

Label	Description	Width	Depth	Qty	Piles	Pcs	Length
J4	RFPI 400	2,063	16			6	22'-0"
J3	RFPI 400	2,063	16			6	10'-0"
J2	RFPI 400	2,063	16			5	8'-0"
J1	RFPI 400	2,063	16			10	6'-0"
J5	RFPI 400	2,063	16			16	4'-0"
G3	RFPI 400	2,063	16			2	8'-0"
G2	RFPI 400	2,063	16			2	8'-0"
G1	RFPI 70	2,313	16	2	2	4	22'-0"

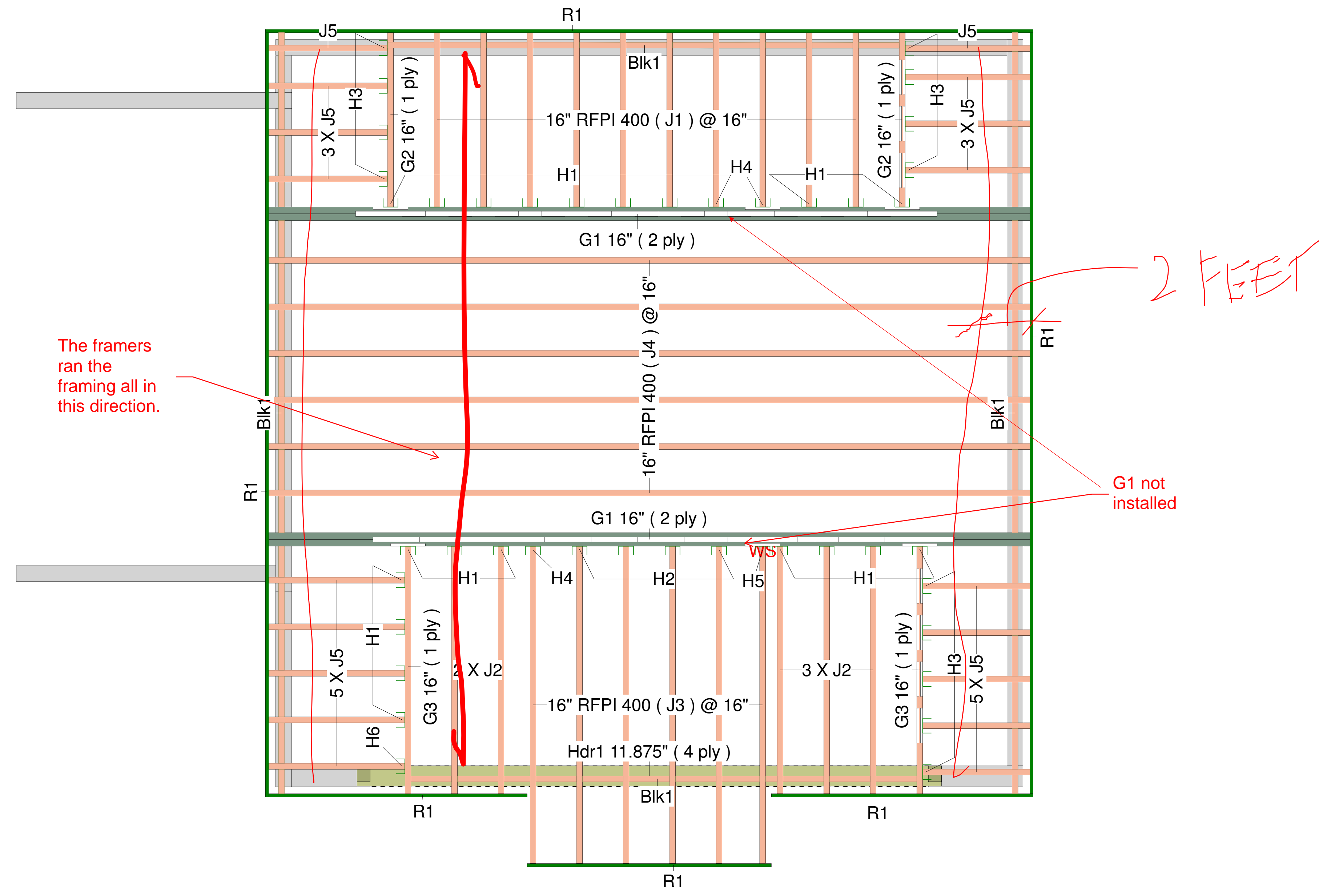
Label	Description	Width	Depth	Qty	Piles	Pcs	Length
Blk1	RFPI 400	2,063	16	LxP1		Varies	63'-0"

Label	Description	Width	Depth	Qty	Piles	Pcs	Length
R1	RigidLam 55E OSB Rim Board 1.125 X 16	1,125	16			8	12

Second Floor Framing

Label	Description	Width	Depth	Qty	Piles	Pcs	Length
Hdr1	2.0E RigidLam LVL	1,75	11.875	1	4	4	18'-0"

Label	Pcs	Description	Skew	Slope	Beam/Girder fasteners	Supported Member fasteners
H1	22	ITS2.06/16			2 10d x 1 1/2	
H2	4	LBV2.06/16			4 16d	6 10d x 1 1/2
H3	13	ITS2.06/16			2 10d	
H4	2	LBV2.06/16			4 10d x 1 1/2	2 10d x 1 1/2
H5	1	HL2.1/11			16 16d	6 10d x 1 1/2
H6	1	Unknown Hanger				



1613 Duncan Ave.

Project: 19-19 joists
 Created: January 11, 2019
 Designer: GH

Legend

	Web Stiffener
	Wall
	Wall Opening
	RigidLam 55E OSB Rim Board 1.125 X 16
	RFPI 400 16
	RFPI 70 16
	2.0E RigidLam LVL 1.75 X 11.875 (Dropped)

Second Floor Framing

Design Method	ASD
Building Code	IBC/IRC 2015
Floor Loads	
Live	40
Dead	15
Deflection Joist	
LL Span /	480
TL Span /	240
LL Cant 2L/	360
TL Cant 2L/	360
Deflection Girder	
LL Span /	360
TL Span /	240
LL Cant 2L/	360
TL Cant 2L/	360
Decking	OSB
Deck	23/32 APA Rated Standard Floor
Fastener	Nailed & Glued

Job Path
 2019\19-19\19-19 joists.lad

Wholesale Wood Products logo