



PARTS & MERCHANDISE
STORE

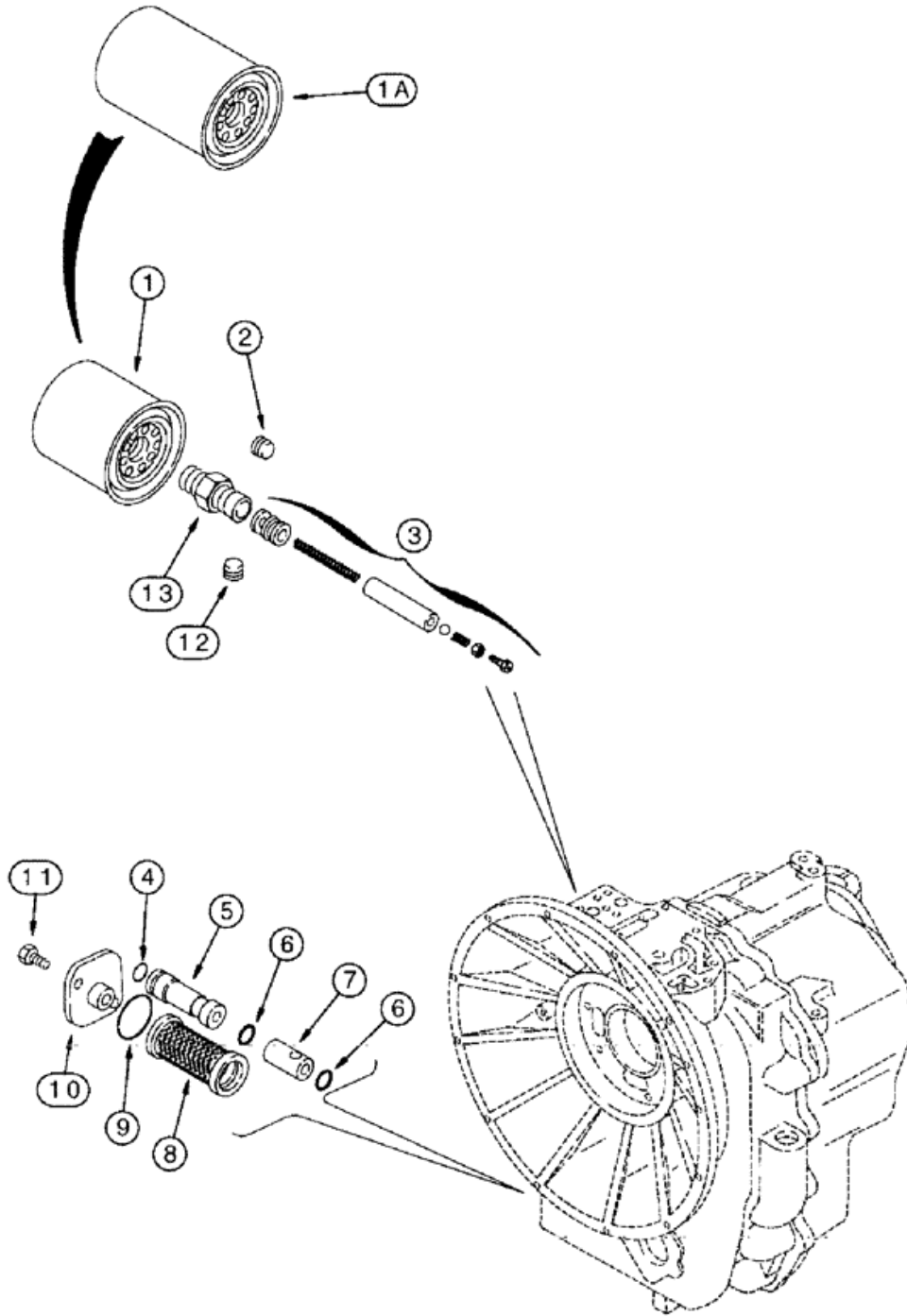
Case Construction

621 State Street

NACustomerRelations@casece.com Racine, Wisconsin 53404

866-542-2736 x1

(590SL) - LOADER BACKHOE (3/95-12/98) > (6-24) - TRANSMISSION ASSEMBLY, OIL FILTERS, TWO-WHEEL AND FOUR-WHEEL DRIVE



BT97C169



PARTS & MERCHANDISE
STORE

Case Construction **621 State Street**
NACustomerRelations@casece.com **Racine, Wisconsin 53404**
866-542-2736 x1

(590SL) - LOADER BACKHOE (3/95-12/98) > (6-24) - TRANSMISSION ASSEMBLY, OIL FILTERS, TWO-WHEEL AND FOUR-WHEEL DRIVE

Diag #	Part #	Name	Description	Qty
	123842A1	TRANSMISSION	TRANSMISSION ASSEMBLY - two wheel drive, new, parts list Figures 6-24, 6-26, 6-30 - 6-38 and 6-42s, Includes: Ref. 1 - 13	1
	123842A1R	REMAN-TRANSMISSION	590SL, Two Wheel Drive, **Note - The Supplier Part Number For Case P/N 123842A1R Is 131143. If The Unit That Is Being Removed From The Tractor Does Not Have This Supplier P/N, Do Not Order 123842A1R As A Replacement	1
	123842A1C	CORE-TRANSMISSION	Return Number	1
	123843A1R	REMAN-TRANSMISSION	Remanufactured Transmission	1
	123843A1C	CORE-TRANSMISSION	Return Number	1
1	181167A1	FILTER, ENGINE OIL	FILTER, OIL FILTER - oil, cartridge, transmission, tractor P.I.N. JJG0208500 thru JJG0209872, no longer used, order 254686A1	1
		To identify which filter is fitted on your unit, see the part number stamped on your filter.	To identify which filter is fitted on your unit, see the part number stamped on your filter.	1
1A	254686A1	FILTER CARTRIDGE, Spin-on, 13/16" - 16, 97mm OD x 151.6mm L	FILTER, OIL FILTER - oil, cartridge, transmission, 152 mm (6 inch) long	1
		To identify which filter is fitted on your unit, see the part number stamped on your filter.	To identify which filter is fitted on your unit, see the part number stamped on your filter.	1
2	181101A1	PLUG, M14 x 1.5	PLUG - oil, 14 - 1.5 mm, used on four wheel drive models only	1
3	181274A1	REPAIR KIT	KIT - valve, used on four wheel drive models only	1
		Part of Seal Kit, part number 278836A1	Part of Seal Kit, part number 278836A1	1
4	181141A1	O-RING, 17.12mm ID x 2.62mm Width	O-RING - small, used on four wheel drive models only	1
		Part of Seal Kit, part number 278836A1	Part of Seal Kit, part number 278836A1	1
5	181196A1	PLUG	PLUG - bypass valve, used on four wheel drive models only	1
6	190426A1	O-RING	O-RING - bypass valve, cylinder, one (1) used at each end of Ref. 7, cylinder bypass valve, used on four wheel drive models only	2

Diag #	Part #	Name	Description	Qty
		Part of Seal Kit, part number 278836A1	Part of Seal Kit, part number 278836A1	1
7	190433A1	CYLINDER	CYLINDER - bypass valve, used on four wheel drive models only	1
8	278534A1	FILTER SCREEN	FILTER - oil, replaces 181168A1 filter	1
9	100748A1	O-RING,1.421" ID x 1.699" OD x 0.139"	O-RING - sealing	1
		Part of Seal Kits, part numbers 278302A1 and 278836A1	Part of Seal Kits, part numbers 278302A1 and 278836A1	1
10	181219A1	COVER	COVER - access, oil filter	1
11	614-8018	BOLT,Hex, M8 x 1.25 x 18mm, Cl 8.8, Full Thd	BOLT - hex, full threads, 8 - 1.25 x 18 mm	2
12	181102A1	PLUG	PLUG - oil, used on four wheel drive models only	1
13	181202A1	FITTING	CONNECTOR - straight, used with Ref 1 filter, no longer used, not required with 254686A1 filter	1
	278302A1	SET OF PARTS	KIT seal, transmission overhaul, two wheel drive, Includes Ref. 9 above, also see kit parts on Figures 6-26, 6-32 - 6-38 and 6-42	1
	278836A1	SET OF PARTS	KIT seal, transmission overhaul, four wheel drive, Includes Ref. 3, 4, 6 and 9 above, also see kit parts on Figures 6-28 and 6-32 - 6-44	1