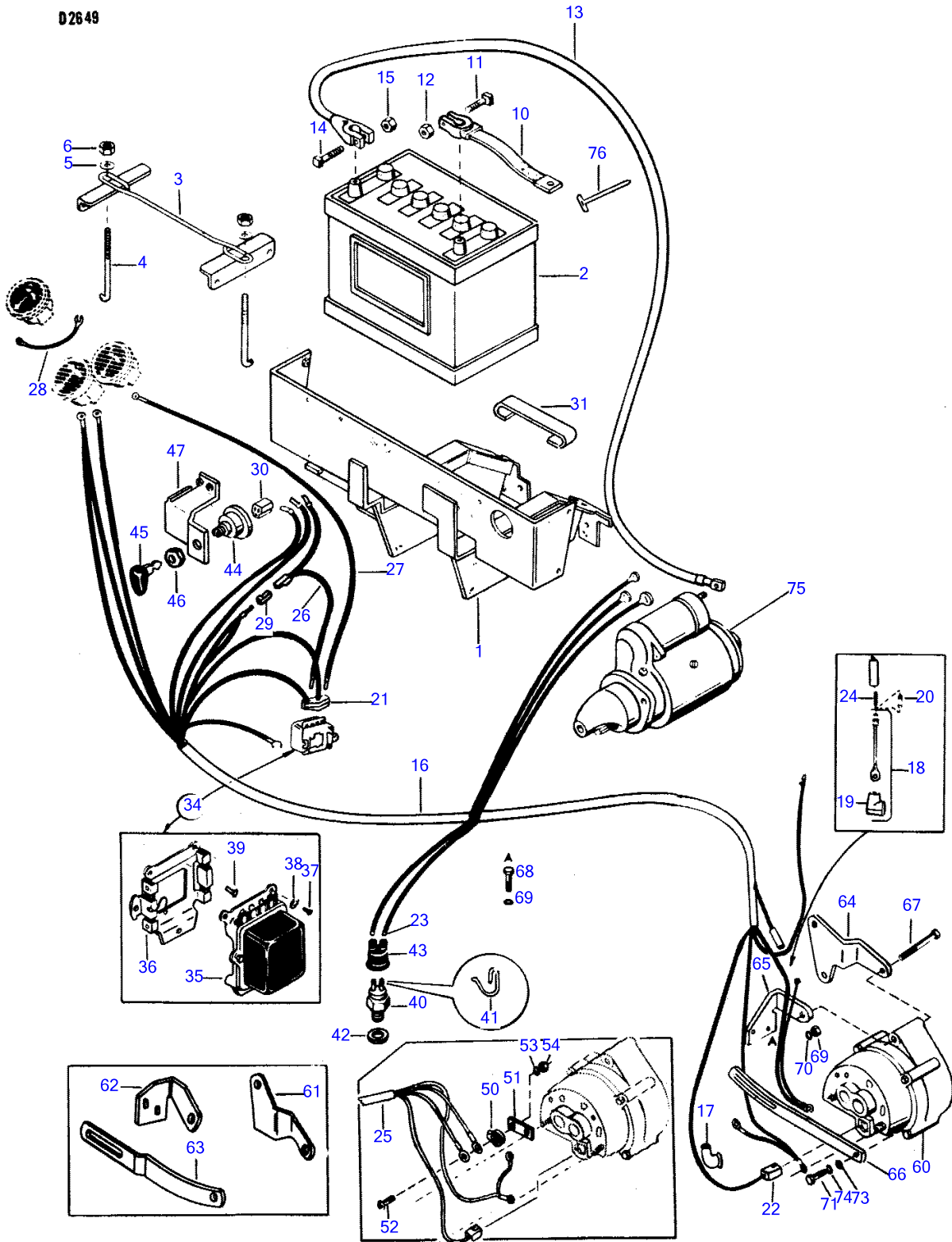


102

BATTERY AND WIRING

D2649



1st Print

651 281 M93 (Issue 1) 9/75

Item	Part Number	Qty	Description
1	515142M92	1	Platform Assembly
2	832704M3	1	Battery, 12 Volt
3	508888M1	1	Retainer, Battery
4	515156M3	2	Rod, Hold-Down (1/4" NF, Thread)
5	355618X1	2	Washer (5/16" Flat)
6	195256M1	2	Nut (1/4" NF, Hex., Lock)
10		1	(A) Cable Assembly, Ground
11	182736M1	1	Bolt (5/16 x 1-3/8" NC Special)
12	180296M1	1	Nut (5/16" NC, Hex., Special)
13	186689M91	1	Cable Assembly (25") (Positive)
14	180169M1	1	Bolt (5/16 x 1-1/2" NC, Sq. Hd. Special)
15	180296M1	1	Nut (5/16" NC, Hex., Special)
16	522139M92	1	(B) Harness Assembly
17	526024M1	1	(C) Boot, Seal
18	522508M91	1	(D) Holder Assembly
19	510168M1	1	Boot, Switch Cover
20	192340M1	1	(C) Fuse (30 Amp.)
	522511M1	1	(D) Fuse (60 Amp.)
21	510166M1	1	Connector, Female
22	510167M1	1	Connector, Female
23	1750658M1	2	Terminal, Electrical (Bullet Type)
24	1750613M1	1	Spring, Fuse Holer
25	516148M92	1	(E) Harness Assembly
26	516149M91	1	Cable Assembly
27	516415M91	1	Cable Assembly
28	509677M91	1	Cable Assembly, Indicator Light
29	504817M1	2	Connector, Wire
30	504738M1	1	Connector, Wire
31	515155M1	1	Spacer, Battery Platform
34	508551M91	1	(F) Regulator Assembly
35	1031060M91	1	(G) Regulator Assembly
36	1031061M91	1	(G) Mount Assembly
37	360281X1	3	Screw (1/4" Pan Hd.)
38	353441X1	3	Washer (1/4" Lock)
39	364778X1	2	Bolt (1/4 x 3/8" NC, Hex., Washer Hd., Tapping)
40	181140M94	1	Switch Assembly, Neutral Safety
41	1752610M2	1	Terminal, Switch
42	181142M1	1	Washer (23/32 x 1 x 1/32" Flat)
43	180776M1	1	Boot, Neutral Safety Switch
44	504809M91	1	Switch Assembly, Start
45	192922M1	1	Key and Ring Assembly
46	180293M1	1	Nut (5/8" NF, Half Hex.)
47	508364M91	1	Bracket Assembly
50	513983M91	1	(E) Terminal Assembly
51	366261X1	1	(E) Strap, Terminal
52	353982X1	1	(E) Screw (#10 - 24 x 5/8" Pan Hd. Slt.)
53	353445X1	1	(E) Washer (#10 Lock)
54	354120X1	1	(E) Nut (#10 NC, Hex., Lock)
60		1	Alternator (See Page 85)
61	512948M1	1	Support, Front (Ind.)
62	512949M1	1	Support, Rear (Ind.)
63	517505M2	1	Strap, Adjusting (Ind.)
64	518503M1	1	Support (Turf)
65	518504M1	1	Support, Rear (Turf)
66	511373M3	1	Strap, Alternator (Turf)
67	354273X1	1	Bolt (3/8 x 3" NC, Hex.)
68	353690X1	2	Bolt (3/8 x 7/8" NC, Hex.)
69	353434X1	3	Washer (3/8" Lock)
70	355566X1	1	Nut (3/8" NC, Hex.)
71	353677X1	1	Bolt (5/16 x 3/4" NC, Hex.) (Ind.)
	353679X1	1	Bolt (5/16 x 1" NC, Hex.) (Turf)
73	353755X1	1	Washer (11/32 x 11/16 x 5/64" Flat) (Turf)
74	353446X1	1	Washer (5/16" Lock) (Turf)
75		1	Starter Assembly (See Page 89)
76	515103M1	1	Strap, Tie

Item	Part Number	Qty	Description
			(A) - Make From 839032M92. Battery Cable Kit.
			(B) - Used Late Production Tractors.
			(C) - Used Tractor Serial Number 9A92743, 9A92796, 9A93703 And Up.
			(D) - Used Prior To Tractor Serial Number 9A93703 Except 9A92743 And 9A92796.
			(E) - Used Early Production Tractors.
			(F) - Used In Production. Regulator Is Riveted To Mount. To Replace Regulator Order 1031060M91, Regulator And 3 Each Of 360281X1, Screw And 353441X1 Washer. To Replace Mount Order 1031061M91, Mount.
			(G) - For Repairs Only. See Note "A".