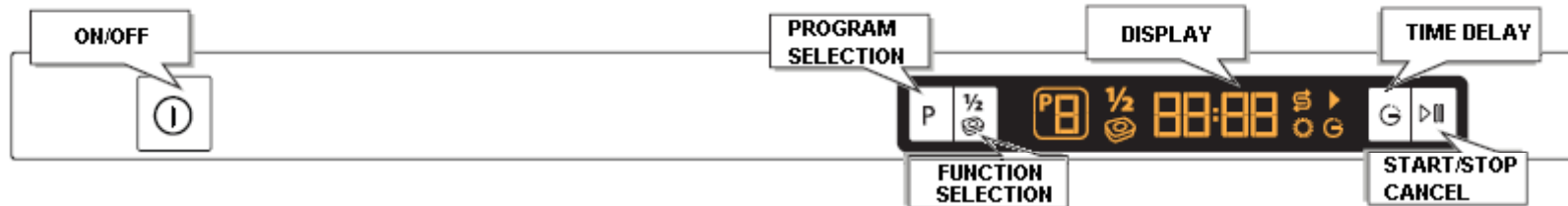


# F5 TROUBLESHOOTING



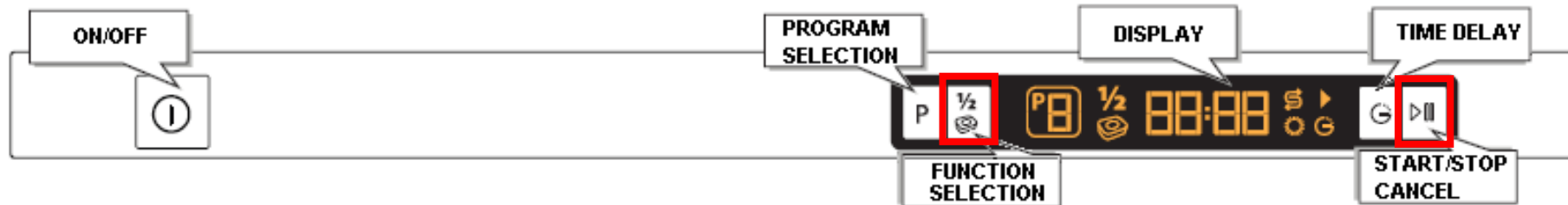
# F5 New Display



## Display color type:

1. Amber
2. Green
3. Red

# SERVICE MODE- Service Function Test (SFT)



•Press and hold the Function Selection and Start/Stop/Cancel Key when the machine is off and press On/Off button simultaneously. To turn on your machine. Release the Program key when the all character is on at hte display.

•Press Start/Stop/Cancel key to start Service Function Test.

•End of test , error number will be displayed if error exists.

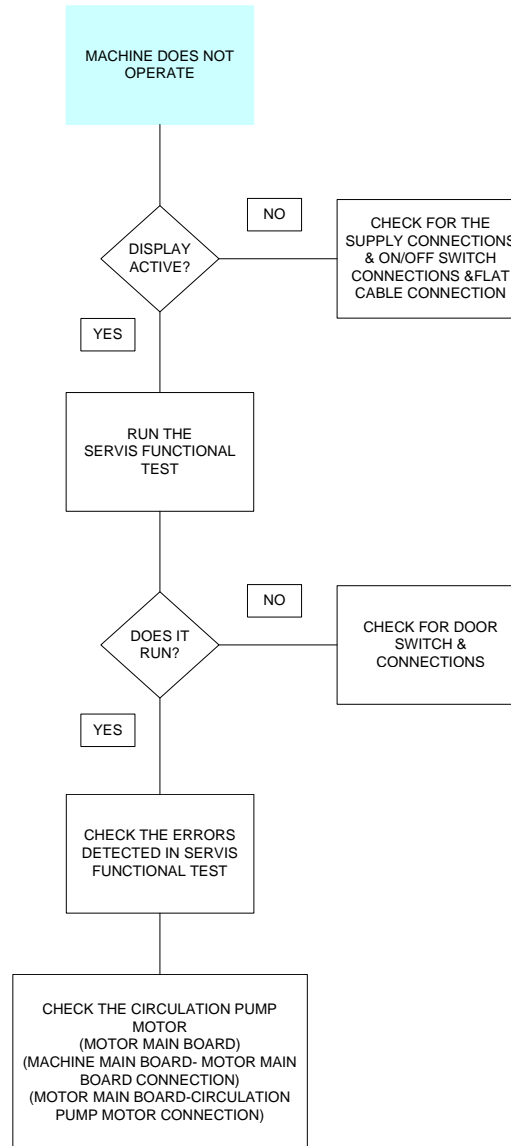
# SERVICE MODE- Service Function Test (SFT) Program Steps

SFT	Step	Variable	3WV	Rpm
P1	DRAIN + FAN	30 sec	DOWN	-
P2	WATER +REJENERATION + DRAIN	1,2 lt.	DOWN	-
P3	WATER	4,0 lt.	DOWN	-
P4	WAIT	X sec.	-	-
P5	CIRCULATION + HEATER + DETERGENT	60 sec.	30sn UP, 30sn DOWN	3200
P6	CIRCULATION + HEATER	125 sec	30sn UP, 30sn DOWN	2800
P7	DRAIN	30 sec	DOWN	-
P8	REJENERATION	60 sec	DOWN	-
P9	WAIT	x sec	-	-
P10	WATER + DRAIN	3,0 lt.	DOWN	-
P11	DRAIN	30 sec	DOWN	-

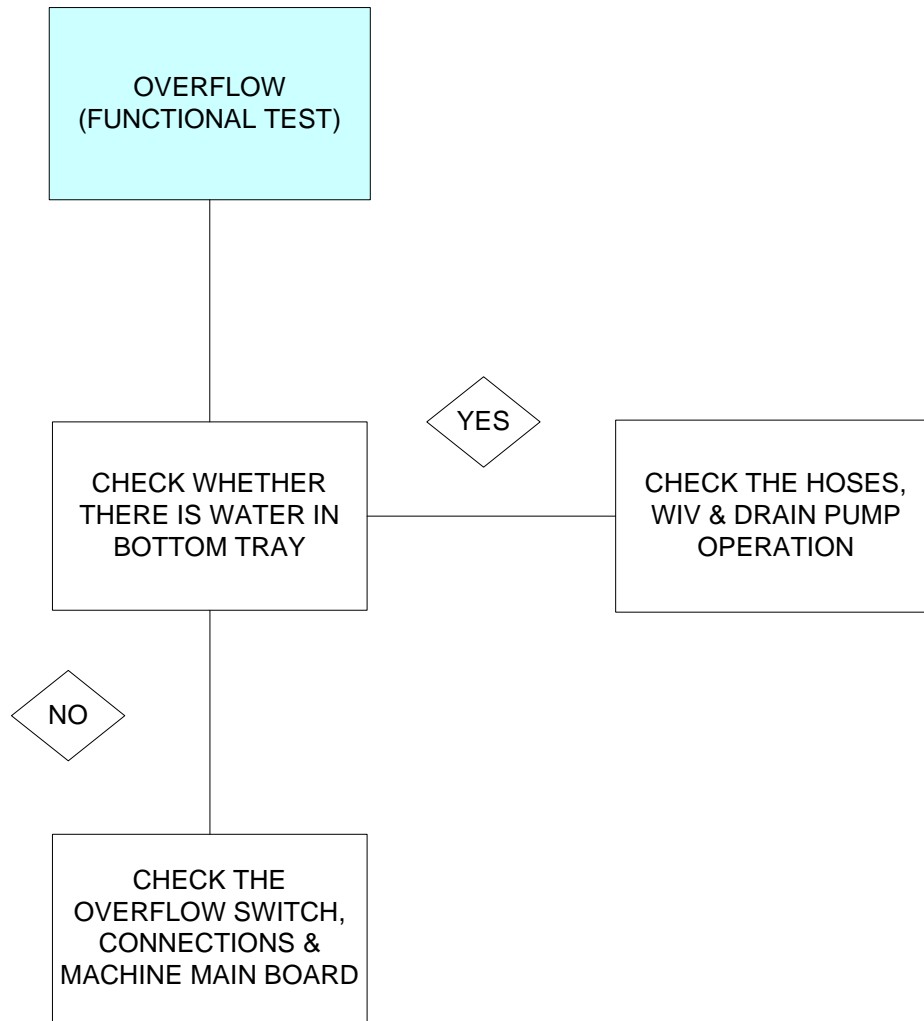
# SERVIS MODE- Service Function Test (SFT) Fault Code

ERROR CODES	DETAILS
E:1	Owerflow
E:2	No Water
E:3	Heater Fault
E:4	Turbidity Sensor Fault (if applicable)
E:5	3W Valve Position Error (if applicable)
E:6	NTC Fault
E:7	Water-Inlet Fault
E:8	Memory Fault
E:9	Communication Fault

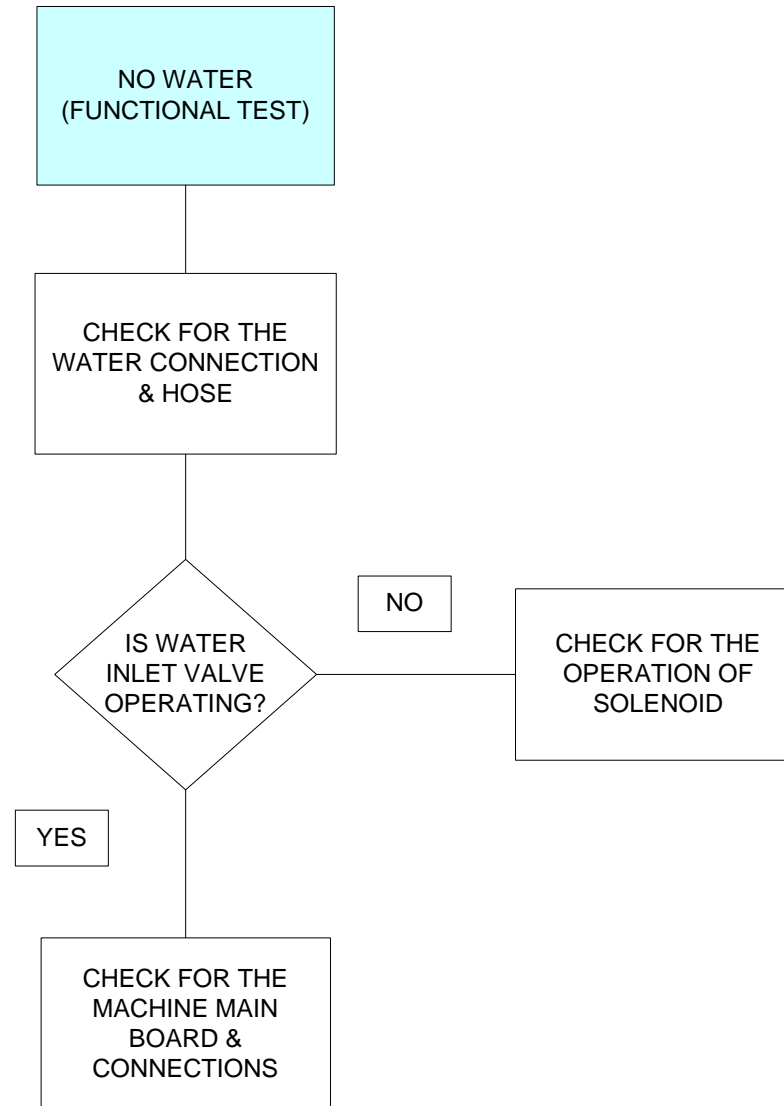
# SERVICE MODE- Service Function Test (SFT) Machine does not operate.



# SERVICE MODE- Service Function Test (SFT) Owerflow (Er: 1)

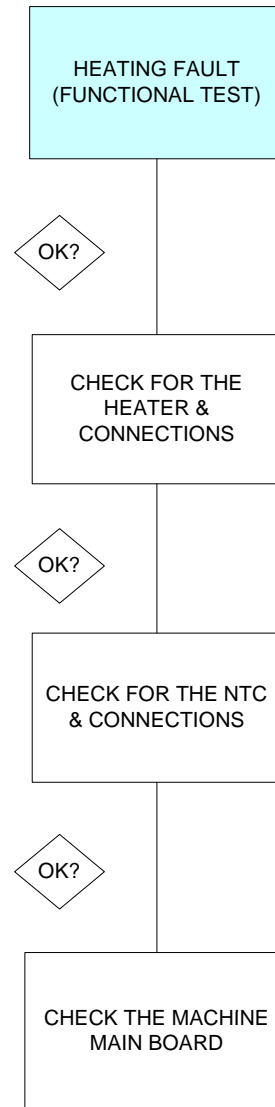


# SERVICE MODE- Service Function Test (SFT) No Water (Er: 2)

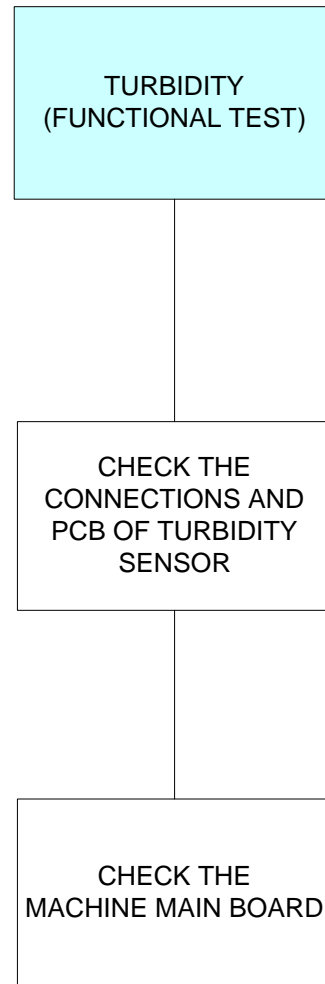




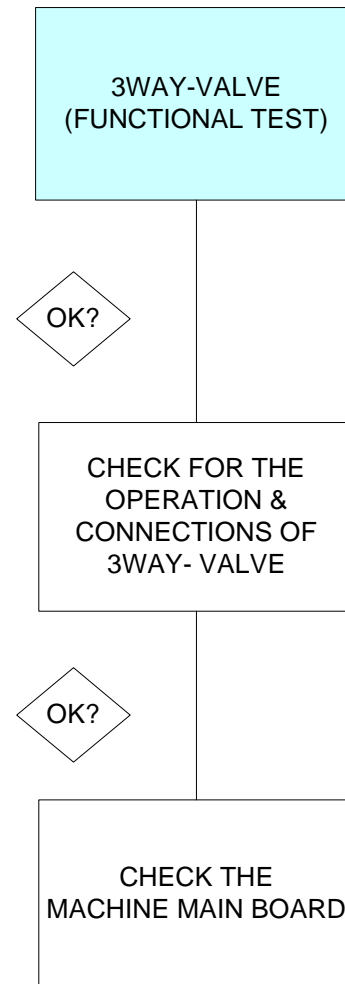
# SERVICE MODE- Service Function Test (SFT) Heatin Fault (Er: 3)



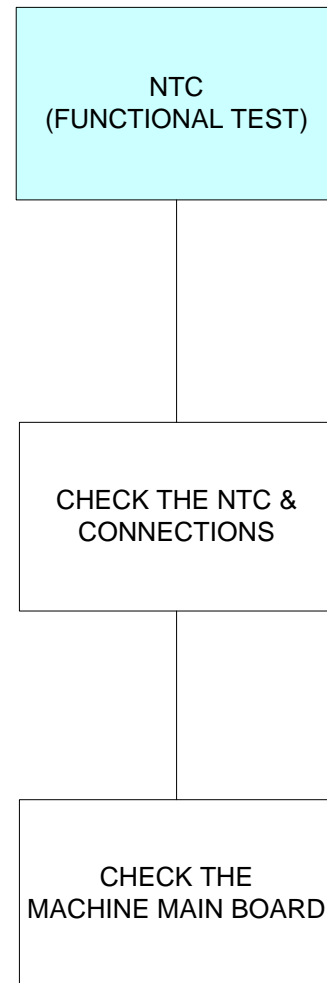
# SERVICE MODE- Service Function Test (SFT) Turbidity Fault (Er: 4)



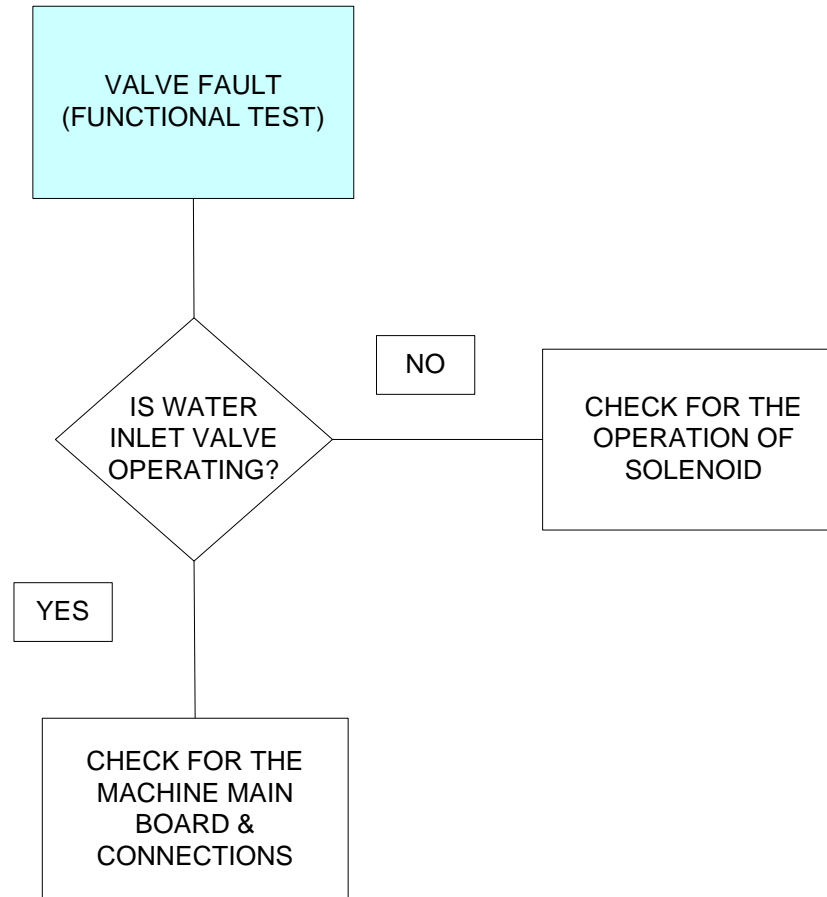
# SERVICE MODE- Service Function Test (SFT) 3 Way Valve Fault (Er: 5)



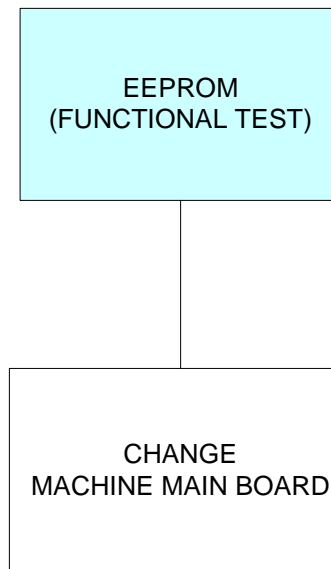
# SERVICE MODE- Service Function Test (SFT) NTC Fault (Er: 6)



# SERVICE MODE- Service Function Test (SFT) Water Valve Fault (Er: 7)



# SERVICE MODE- Service Function Test (SFT) Memory Fault (Er: 8)



# SERVICE MODE- Service Function Test (SFT) Communication Fault (Er: 9)



**DISPLAY BOARD : KN1 connector**



COMMUNICATION  
FAULT

CHECK THE KN1  
CONNECTOR ON THE  
DISPLAY BOARD



**POWER BOARD: KN7 CONNECTOR**

CHECK THE KN7  
CONNECTOR ON THE  
MAIN BOARD