

SECTION 3 - ELECTRICAL SYSTEM

5. ALWAYS CONNECT new electrical attachments to the engine fuse/relay panel, 1, and connect the grounds to the engine bell housing. USE ONLY vacant connections and fuses not in use for specified attachments.
6. PLEASE REFER to Service Bulletin 11/95-14 for more detailed information about higher amperage requirements and making electrical connections.

Wires and connections are available providing electrical attachments were not previously installed.

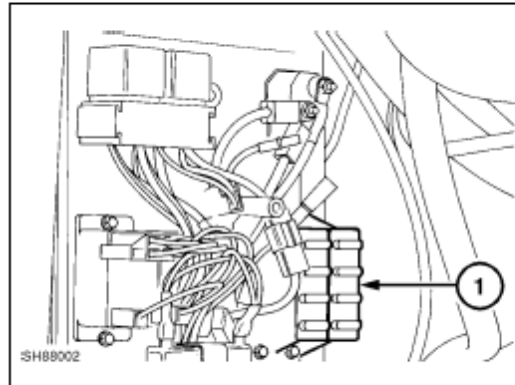


Figure 3-3

**Engine Fuse Panel**

Ref.	Color	Destination	Fuse	Battery Voltage	Status
1	R/B	To turn signal relay	10-amp	All times	Available
2	R/GY	To accessory relay	25-amp	All times	Available
3	R/LTGN	To EIC board pin #14 P2 connector	5-amp	All times	Occupied
4	LTGN/R	To seat switch(es)	5-amp	All times	Occupied
5	R/W	To key switch (battery terminal)	15-amp	All times	Occupied
6	R	From preheat circuit breaker	20-amp	All times	Occupied
7	R	From start relay		All times	Occupied
8	R/O	To heater power relay	20-amp	All times	Available
9	R/T	Spare	7.5-amp	All times	Available
10	DKGN/R	To high flow, horn, power outlet	15-amp	Key "ON" position	Available
11	O/LTGN	From accessory relay		Key "ON" position	Occupied
12	O/W	To Back-up alarm switch	5-amp	Key "ON" position	Available
13	O/LTGN	From road/work light fuse (cab panel)		Key "ON" position	Occupied

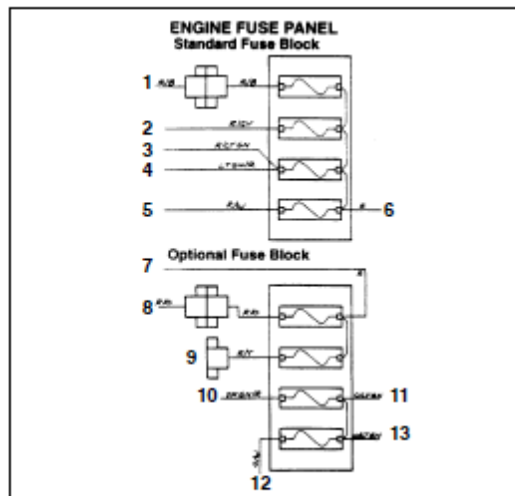


Figure 3-4

### SECTION 3 - ELECTRICAL SYSTEM

Different types of wire connectors are used on these circuits and suitable connectors will need to be used on the attachment/device for proper power supply connection.

Complete new auxiliary wiring circuits can be installed as shown here, depending on electrical requirements.

Mounting holes for the added circuit breakers must be drilled in the panel. Disconnect the battery before drilling and installing new wiring. Protect the panel parts from drill shavings that could cause electrical shorting of components.

Suggested sealed circuit breakers are:

Part Number	Capacity
9827329	15-amp
9828493	20-amp
9840279	25-amp
9840280	30-amp

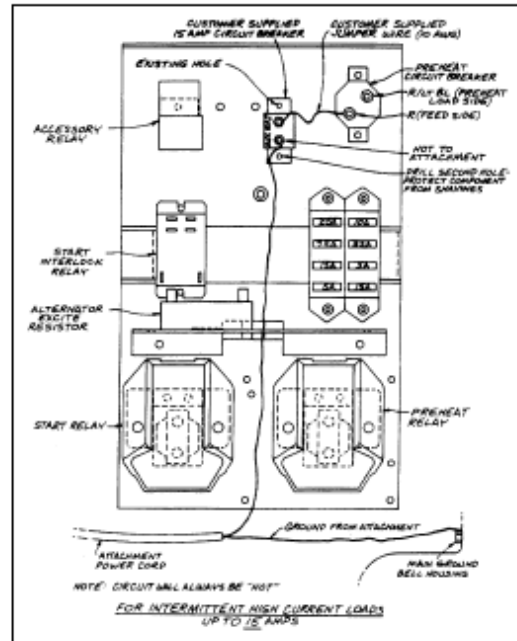


Figure 3-5

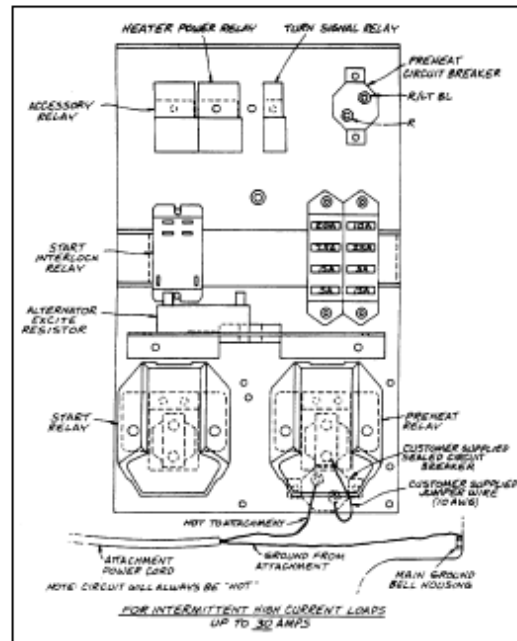


Figure 3-6

