

#PI0376A: MALFUNCTION INDICAT...

#PI0376A: MALFUNCTION INDICATOR LAMP (MIL) ILLUMINATED, DTC **P2714**, SLIP OR FLARE WHEN SHIFTING IN 2ND OR 6TH GEAR (INSPECT CHANNEL PLATE AND SPACER PLATE) (APR 21, 2011)

Document
ID#
2636783

#PI0376A: MALFUNCTION INDICATOR LAMP (MIL) ILLUMINATED, DTC **P2714**, SLIP OR FLARE WHEN SHIFTING IN 2ND OR 6TH GEAR (INSPECT CHANNEL PLATE AND SPACER PLATE) (APR 21, 2011)

Subject: Malfunction Indicator Lamp (MIL) Illuminated, DTC **P2714, Slip or Flare When Shifting in 2nd or 6th Gear (Inspect Channel Plate and Spacer Plate)**



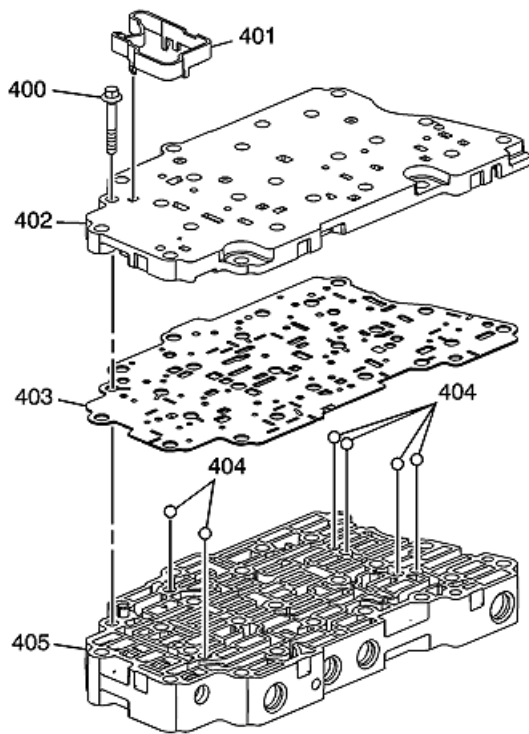
**Models: 2011 Buick LaCrosse, Regal
2011 Chevrolet Cruze, Equinox, Malibu
2011 GMC Terrain
Equipped with 4 Cylinder Engine and 6T40 or 6T45 (RPOs MHC, MH7 or MH8)
Automatic Transmission**

This PI is being revised to update the labor times. Please discard PI0376.

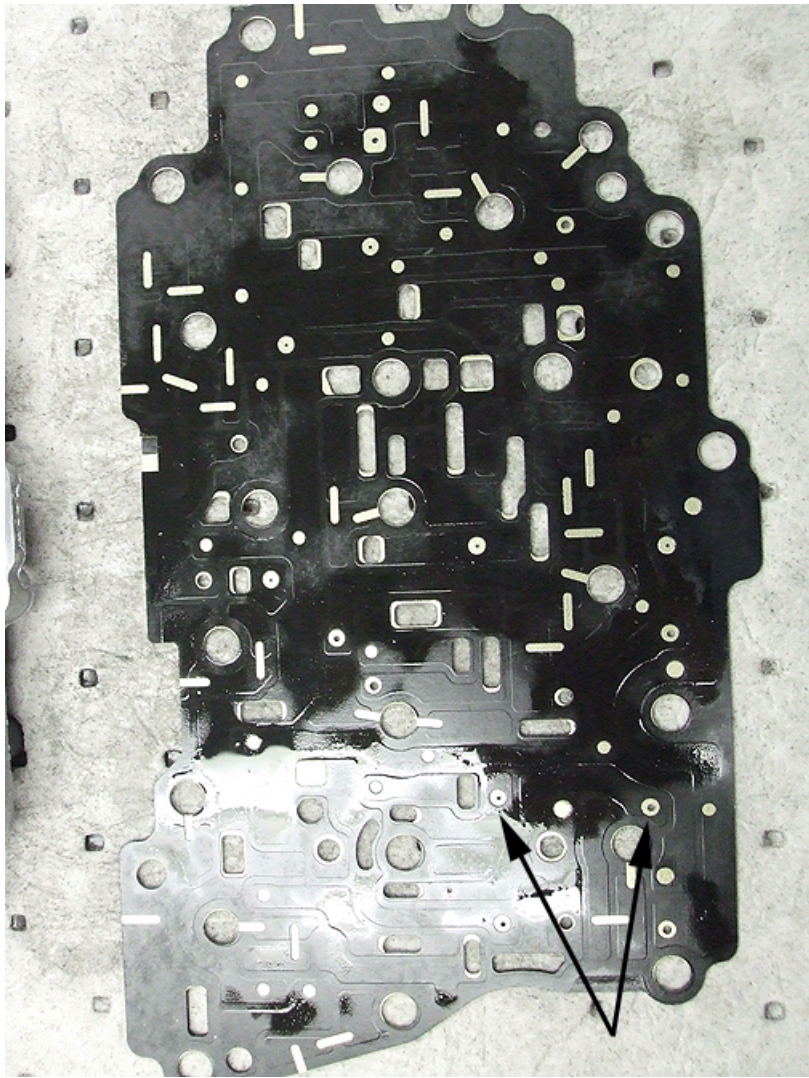
Condition/Concern

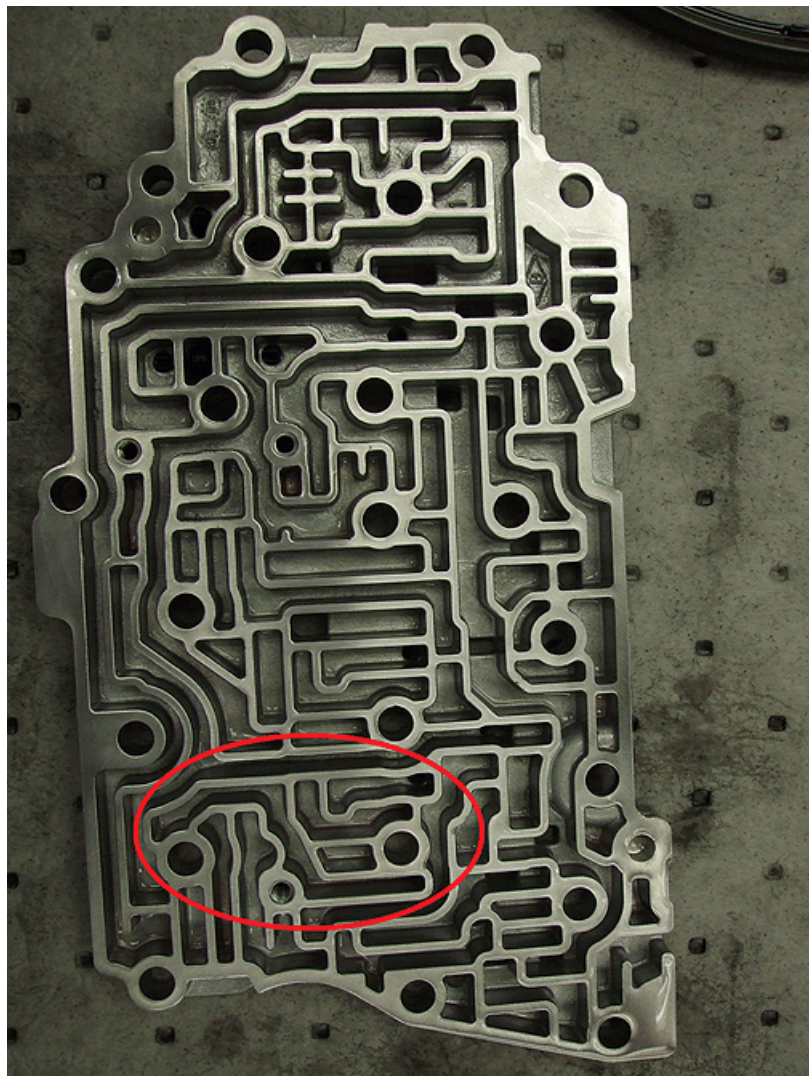
Some customers may comment that the transmission slips when shifting to second or sixth gear. Customers may also comment that the MIL is illuminated. Upon further investigation, technicians may find DTC **P2714** as an active or history code in the TCM.

This condition may be caused by debris such as small metal or plastic chips or small pieces of paper blocking orifices in the spacer plate. This is especially possible if the condition is intermittent as the debris may move and cause the condition by blocking an orifice during one drive cycle and not the next.

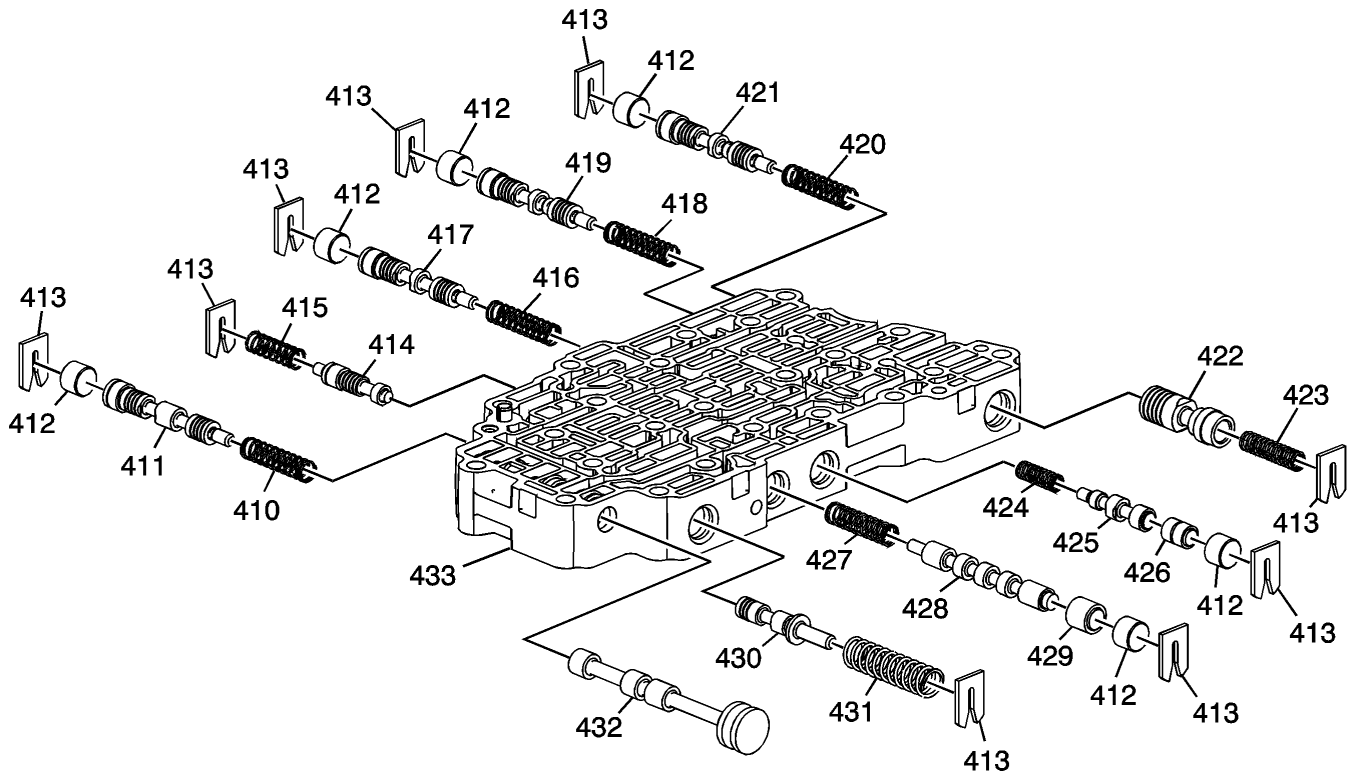
Recommendation/Instructions

Remove the valve channel plate (402) and the spacer plate (403) from the transmission.





Inspect the channel plate and the spacer plate for any debris in the areas identified. These are the oil channels and orifices that provide oil to the 2-6 clutch regulator valve. Clean the channel plate and the spacer plate thoroughly. Also clean the valve body thoroughly, making sure that the 2-6 regulator valve (419) moves freely.



Be sure to also review SI diagnostics for DTC [P2714](#) and No Second and Sixth Gear for other possible causes of this condition.

Warranty Information

For vehicles repaired under warranty, use:

Labor Operation	Description	Application	Labor Time
K9555*	Inspect and Clean Channel and Spacer Plates	Buick LaCrosse, Regal	2.0 hr
		Chevrolet Cruze	2.4 hr
		Chevrolet Equinox, GMC Terrain	2.6 hr
		Chevrolet Malibu	2.9 hr

* This is a unique labor operation for PI use only. It will not be published in the Labor Time Guide.

GM bulletins are intended for use by professional technicians, NOT a "do-it-yourselfer". They are written to inform these technicians of conditions that may occur on some vehicles, or to provide information that could assist in the proper service of a vehicle. Properly trained technicians have the equipment, tools, safety instructions, and know-how to do a job properly and safely. If a condition is described, DO NOT assume that the bulletin applies to your vehicle, or that your vehicle will have that condition. See your GM dealer for information on whether your vehicle may benefit from the information.



WE SUPPORT
VOLUNTARY
TECHNICIAN
CERTIFICATION

Copyright General Motors Corporation.

Portions of materials contained herein are sourced from General Motors Inc., Co.

Copyright 2007 - 2015 Service Repair Solutions, Inc.