

Hydraulic System Lockout

SMCS - 5479-HR

S/N - LBE1-599

S/N - KMW1-UP

S/N - EAT1-UP

S/N - BXE1-2199

S/N - HLS1-UP

S/N - FSH1-899

S/N - DDT1-UP

S/N - GKZ1-599

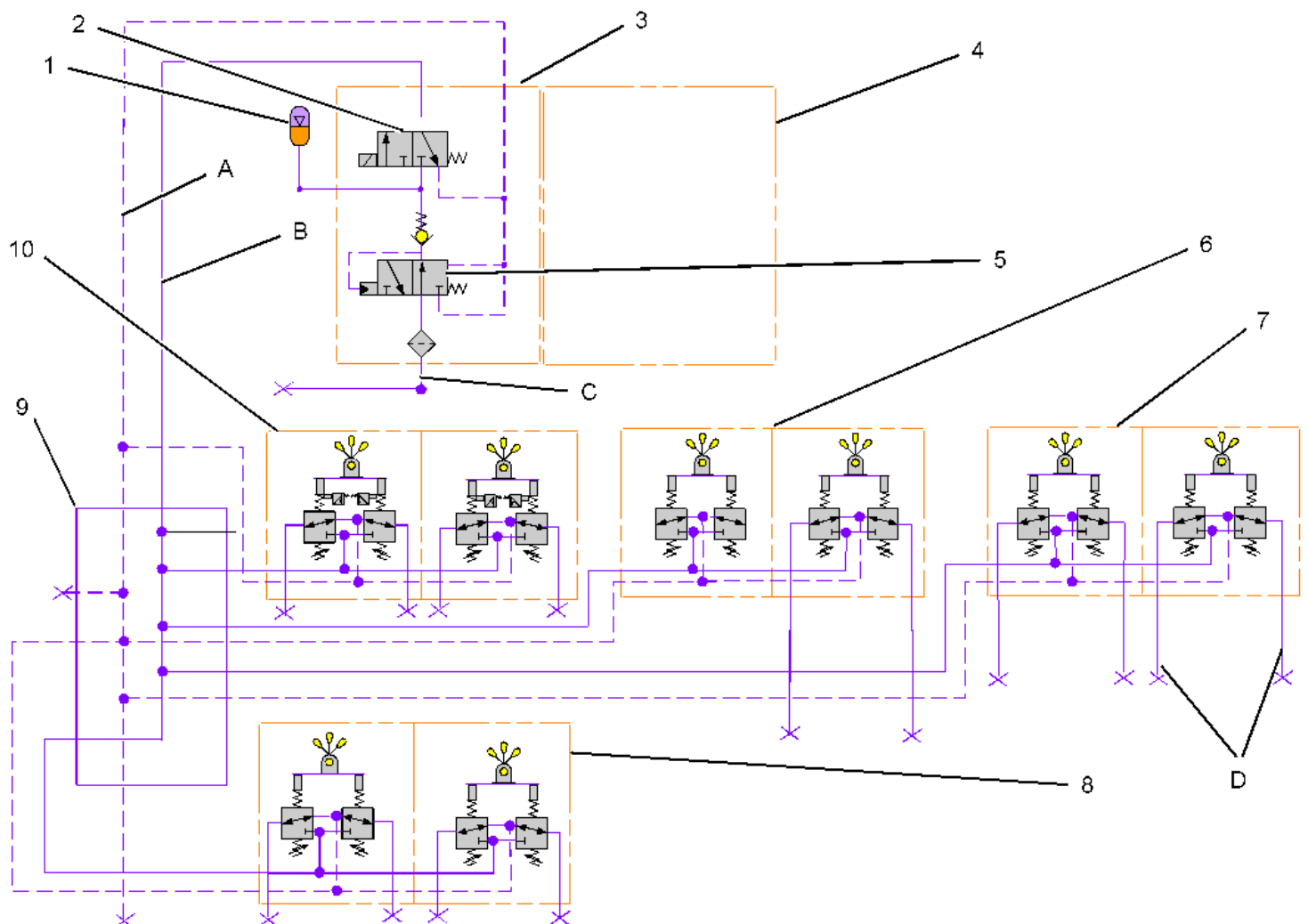


Illustration 1

- (A) Return Line
- (B) Supply line
- (C) Pump oil
- (D) Pilot lines from the joystick
- (1) Accumulator
- (2) Control valve for the pilot shutoff
- (3) Inlet manifold
- (4) Bank valve for the backhoe
- (5) Pressure reducing valve
- (6) Left Joystick for the backhoe
- (7) Right Joystick for the backhoe
- (8) Joystick for the loader
- (9) Return manifold
- (10) Joystick for the stabilizers

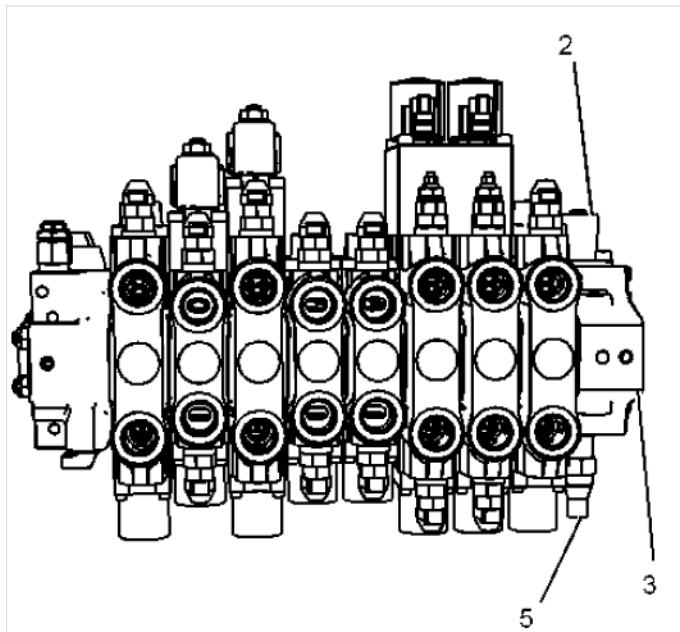


Illustration 2

The lock valve is located on the inlet manifold. The pressure reducing valve is located on the inlet manifold. The inlet manifold is located on the bank valve for the backhoe.

- (2) Control valve for the pilot shutoff
- (3) Inlet manifold
- (5) Pressure reducing valve

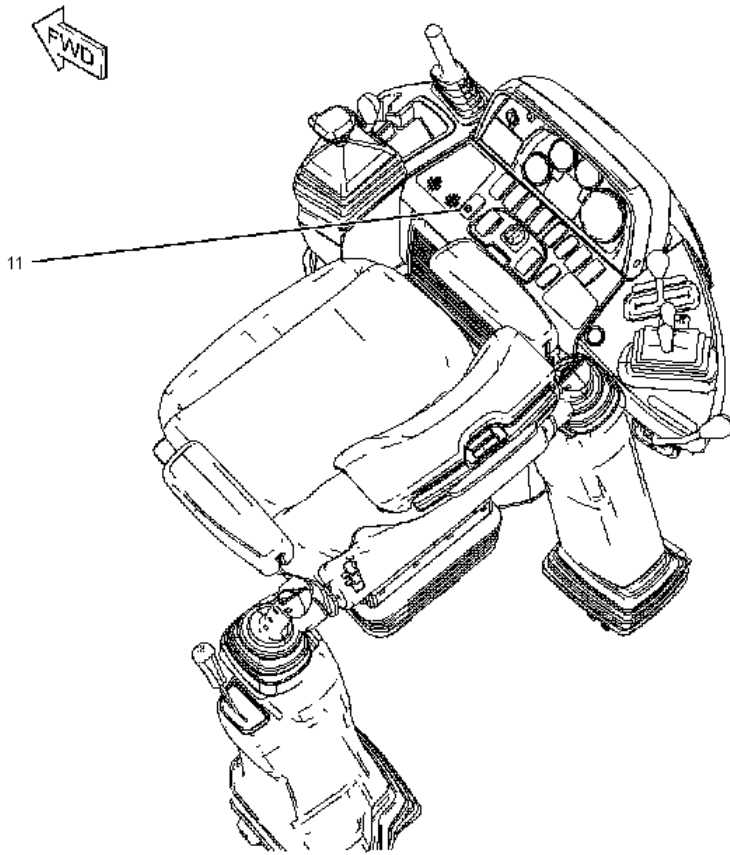


Illustration 3

g01227771

(11) Hydraulic lock switch

Note: The control valve for the **pilot** shutoff (2) is only on the machines with **pilot** operated controls.

Oil from the pump enters the pressure reducing valve (5) through line (C) . Oil from the pressure reducing valve flows to the accumulator (1) and the control valve for the **pilot** shutoff (2) . When the machine is off or the switch (11) for the **pilot** lock valve is engaged, the power is blocked to the solenoid.

The solenoid for the **pilot** shutoff is de-energized when the top of the switch (11) is pressed. When the solenoid for the **pilot** shutoff is de-energized, the **pilot** operated controls for the loader and for the backhoe are deactivated and no movement of the machine can be made by using the **pilot** operated controls. When the top of the switch (11) is pressed, the valve spring is applied. In the lock position, the control valve for the **pilot** shutoff blocks the **pilot** oil to the joysticks.

The solenoid for the **pilot** shutoff is energized by pressing the bottom of the switch (11) . When the solenoid for the **pilot** shutoff is energized, the **pilot** operated controls for the loader and for the backhoe are activated. Movement of the machine can be made by using the **pilot** operated controls. In the unlock position, power is sent to the solenoid on the control valve for the **pilot** shutoff. This allows oil to flow to the joysticks through line (B) . **Pilot** lines (D) from the joysticks control the bank valves for the loader and the backhoe.

Accumulator (1) remains pressurized after the engine is turned off. This allows the operator to use the joysticks to lower the equipment with the engine stopped.

Note: The pressure in the accumulator will only last for a short period of time. The ignition switch must be in the on position before the **pilot** lock valve can be deactivated.